

U.S.S. STEVENS

D.D. 479

MARCH 18, 1944

MISSING: 320 MEN!



500 MILES NORTH OF NEW GUINEA, DD 479 FORMS UP WITH A TASK FORCE HEADING FOR KAVIENG! NOW... SHE IS TAKING ON FUEL FROM THE U.S.S. TENNESSEE...

K-443

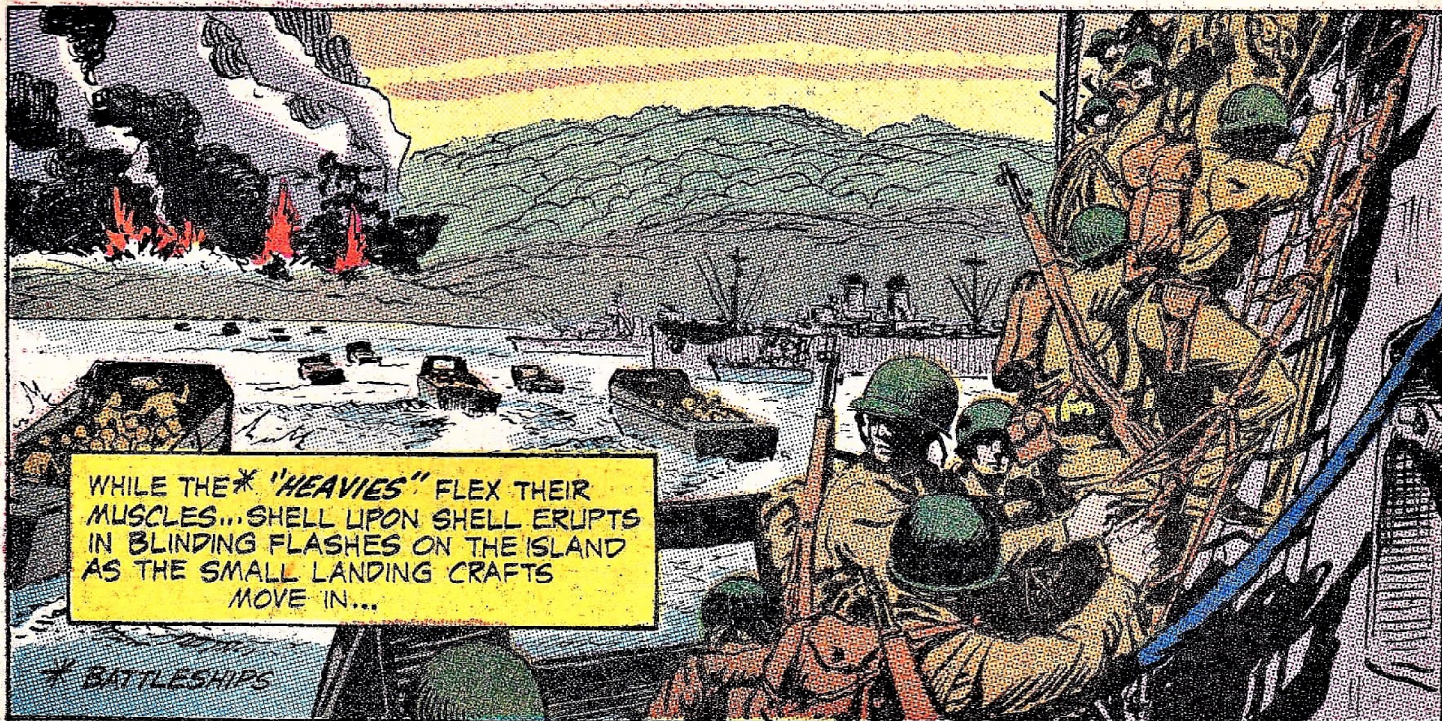
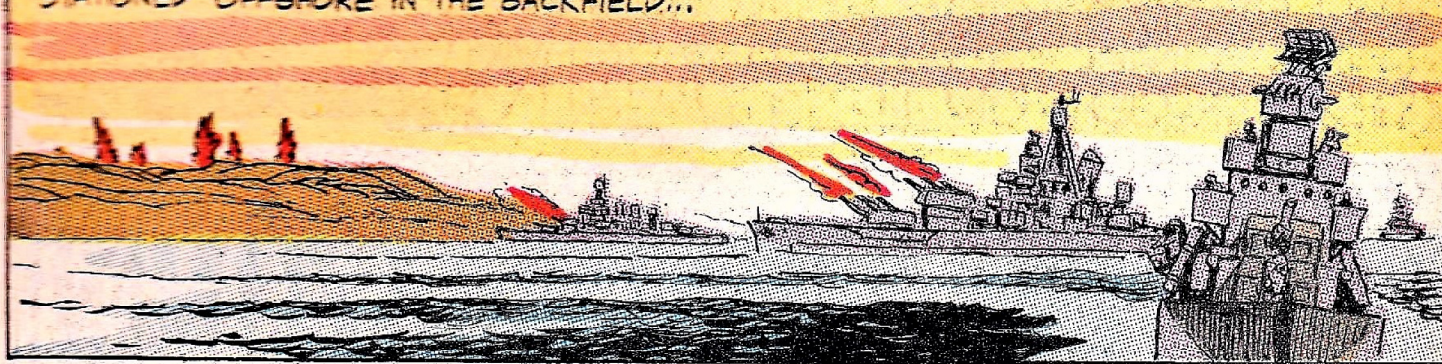


CREW MEMBERS NOT INVOLVED IN THE REFUELING OPERATION... AND WITH NO WATCHES... OR NO CLOTHES TO WASH... OR LETTERS TO WRITE... OR CARDS TO PLAY... GATHER AROUND JERRY BOYLE, AS HE SKETCHES!



HEY, YOU GUYS! MOVE OUTTA THE WAY... SO'S I CAN SEE THE DETAILS ON THE FUELING LINES!

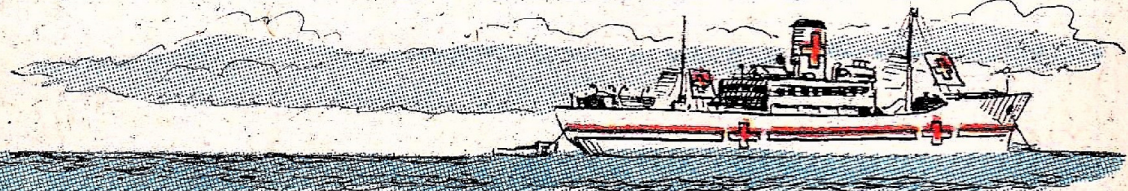
C'MON... STEP TO ONE SIDE, GLUYS...



WHILE THE * "HEAVIES" FLEX THEIR MUSCLES... SHELL UPON SHELL ERUPTS IN BLINDING FLASHES ON THE ISLAND AS THE SMALL LANDING CRAFTS MOVE IN...

* BATTLESHIPS

A HOSPITAL SHIP, (THE "MERCY") WHITE AS DEATH... QUIETLY WAITS...

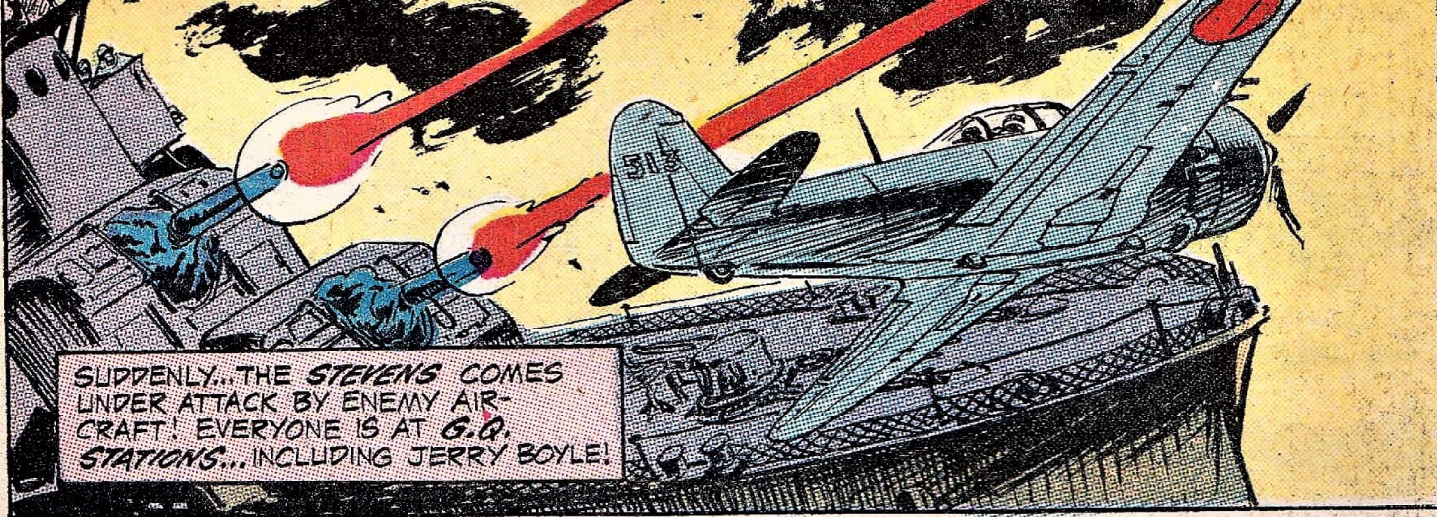


...FOR THE CASUALTIES TO BE BROUGHT BACK... IN A STEADY STREAM.



AND ALL THE WHILE... JERRY BOYLE CONTINUES SKETCHING...

C'MON... HOWS ABOUT SEPARATIN' A LITTLE? I CAN'T DRAW... IF I CAN'T SEE!



SUDDENLY... THE STEVENS COMES UNDER ATTACK BY ENEMY AIR-CRAFT! EVERYONE IS AT G.O. STATIONS... INCLUDING JERRY BOYLE!

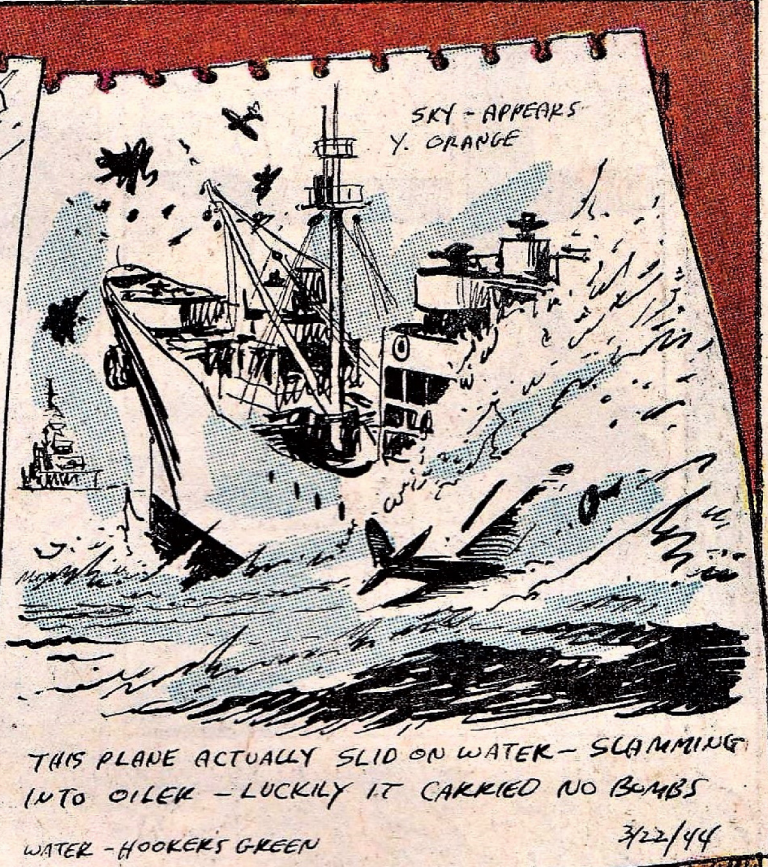
BUT... JERRY GETS TIME TO DO HIS SKETCHES LATER... FROM MEMORY!



#2 MOUNT GETS CREDIT FOR THIS

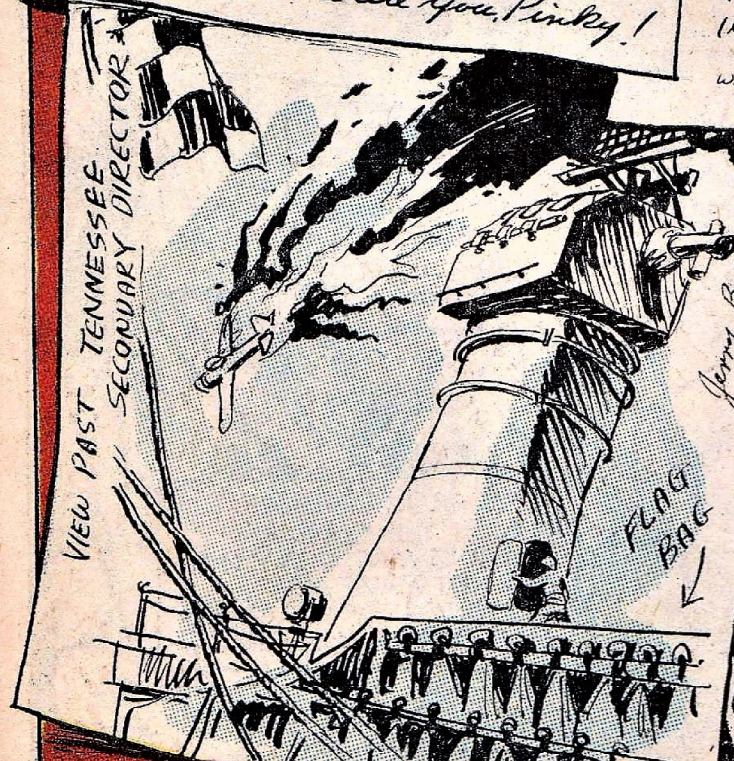
SAVE SKETCH FOR PAUL BERKMAN

— Where are you, Pinky!



SKY - APPEARS Y. ORANGE

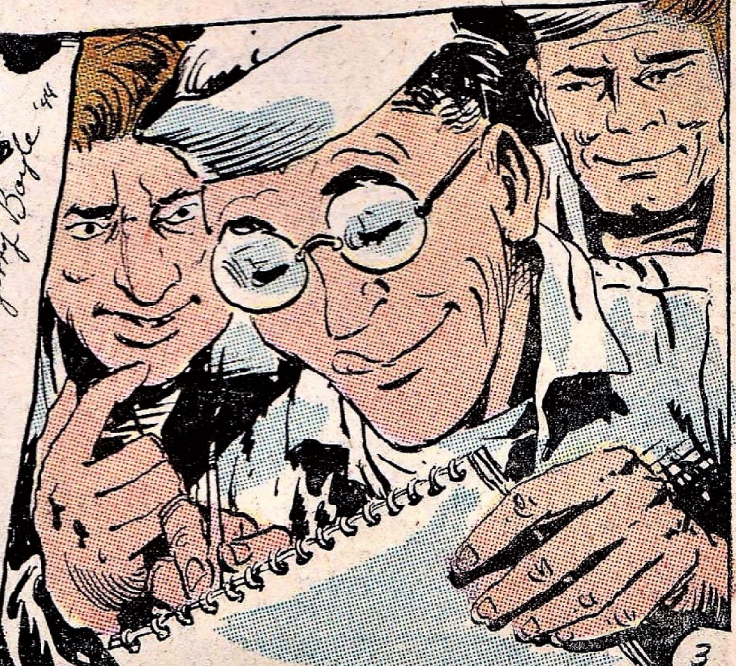
THIS PLANE ACTUALLY SLID ON WATER - SLAMMING INTO OILER - LUCKILY IT CARRIED NO BOMBS
WATER - HOOKER'S GREEN
3/22/44

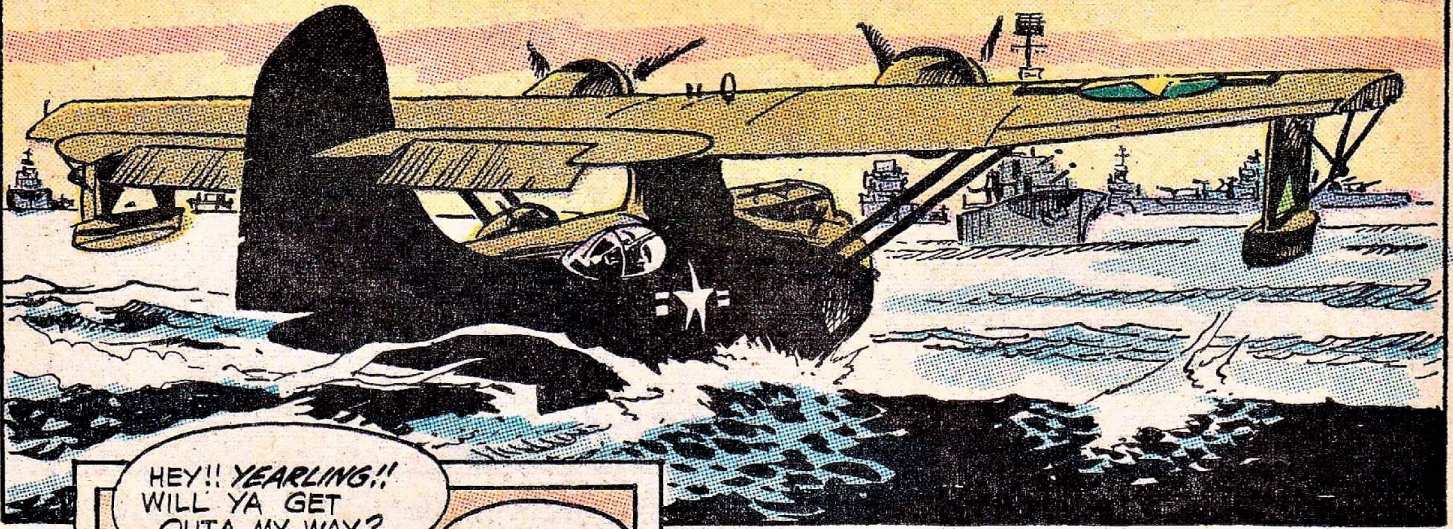


VIEW PAST TENNESSEE SECONDARY DIRECTOR

FLAG BAG

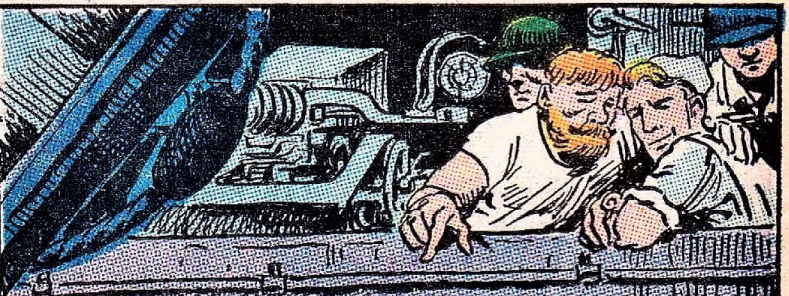
Jerry Boyle '44





HEY!! YEARLING!!
WILL YA GET
OUTA MY WAY?

I WANNA
SKETCH 'AT
PBY!!



COM' ON, YOU
GUYS! I DON'T
WANNA MISS
ANYTHING!



YEARS LATER JERRY BOYLE
WOULD PONDER OVER HIS
DRAWINGS...AND REMEMBER
THAT HE FORGOT TO DRAW
THE MOST IMPORTANT
OBJECTS AROUND HIM!

IN HIS FRANTIC DESIRE TO
SKETCH THE SHIPS AND
FIGHTING MACHINERY... HE
HAD NOT MADE ANY
DRAWINGS OF HIS FELLOW
320 CREW MEMBERS!

The
End